

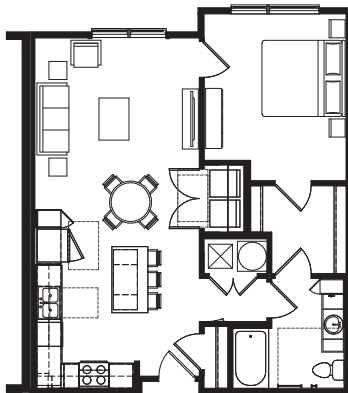
Attachment 36

Schematic Drawings: Multifamily Building Unit Plans (Contemporary)

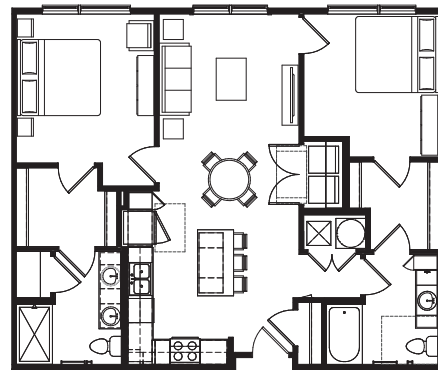


A contemporary multifamily building with community services on the ground floor at the corner of Center Street and Rev. Abraham Woods Jr. Boulevard.

1 Bedroom Unit



2 Bedroom Unit



Scale: 1/16" = 1'-0"



Prototypical Multifamily Elevation

Scale: 1/32" = 1'-0"

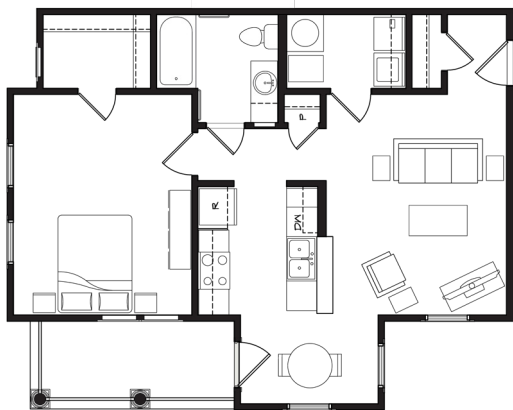
Attachment 36

Schematic Drawings: Multifamily Unit Plans



Traditional walk-up apartments gently meet in the middle of the existing residential and educational scales and styles, and support daily activity around the Parker High School athletic facilities beyond game night.

1 Bedroom Unit



2 Bedroom Unit



Scale: 1/16" = 1'-0"



Prototypical Multifamily Elevation

Scale: 1/32" = 1'-0"

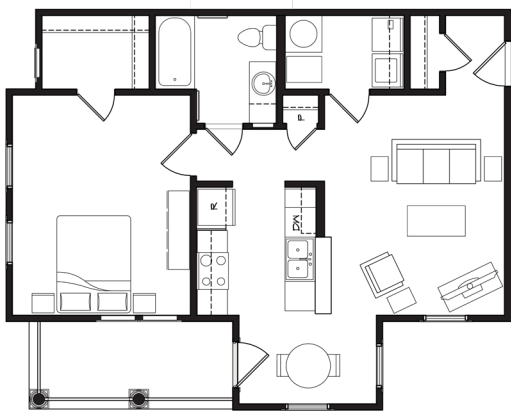
Attachment 36

Schematic Drawings: 6 and 24 Unit Garden Apartment Plans

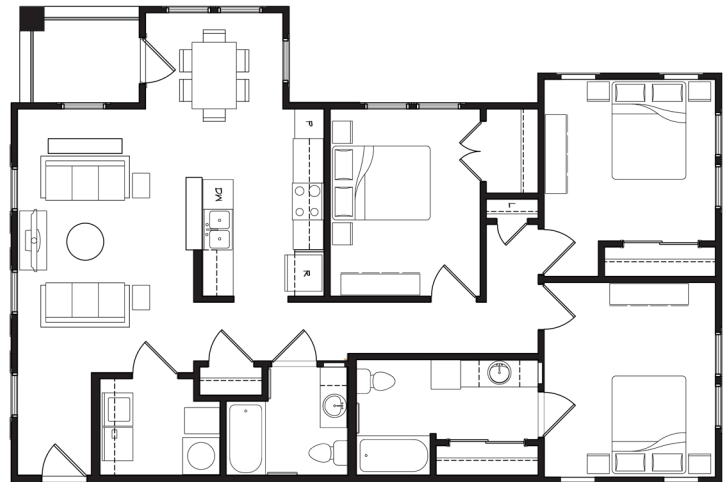


Garden apartments bring density to the neighborhood without an overwhelming sense of scale. These typologies allow for front doors and porches on at least two sides, ideal for street corners.

1 Bedroom Unit

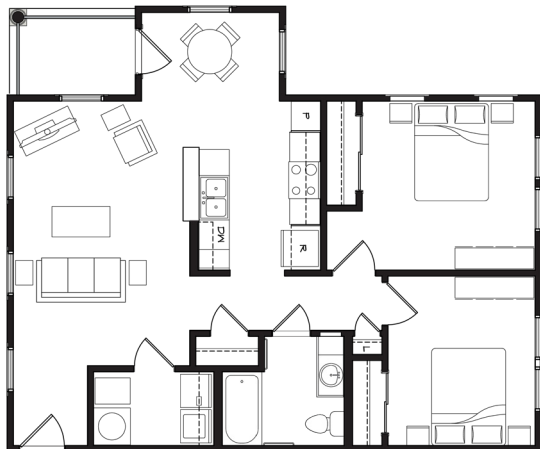


3 Bedroom Unit



Scale: 1/16" = 1'-0"

2 Bedroom Unit



Prototypical Garden Apartment Elevations

Scale: 1/32" = 1'-0"

Attachment 36

Schematic Drawings: Duplex & Townhouse Unit Plans

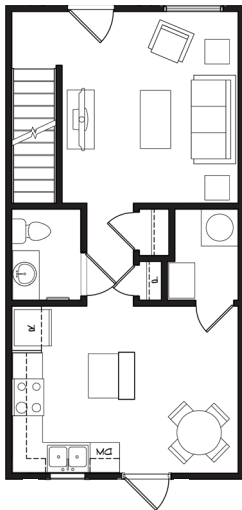


Duplexes, mirroring the existing single family home styles across the street, line Center Street as a natural transition into the current Smithfield Court site.

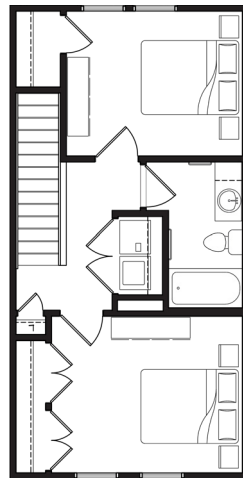


Contemporary style townhomes bring a modern flair into the overall traditionally styled community, echoing the mixed-use edge along Rev. Abraham Woods Jr. Boulevard across the full reimaged neighborhood.

2 Bedroom Unit

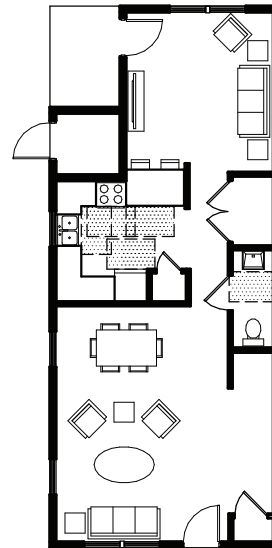


1st Floor

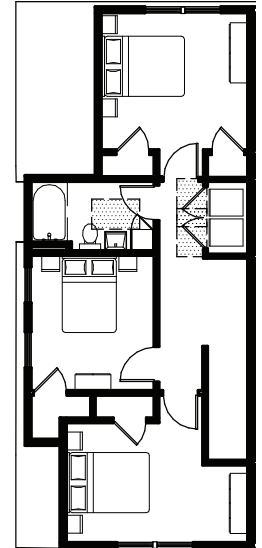


2nd Floor

3 Bedroom Unit



1st Floor



2nd Floor

Scale: 1/16" = 1'-0"



Prototypical Duplex Elevations



Prototypical Townhouse Elevations Scale: 1/32" = 1'-0"