

NEIGHBORHOOD STRATEGY

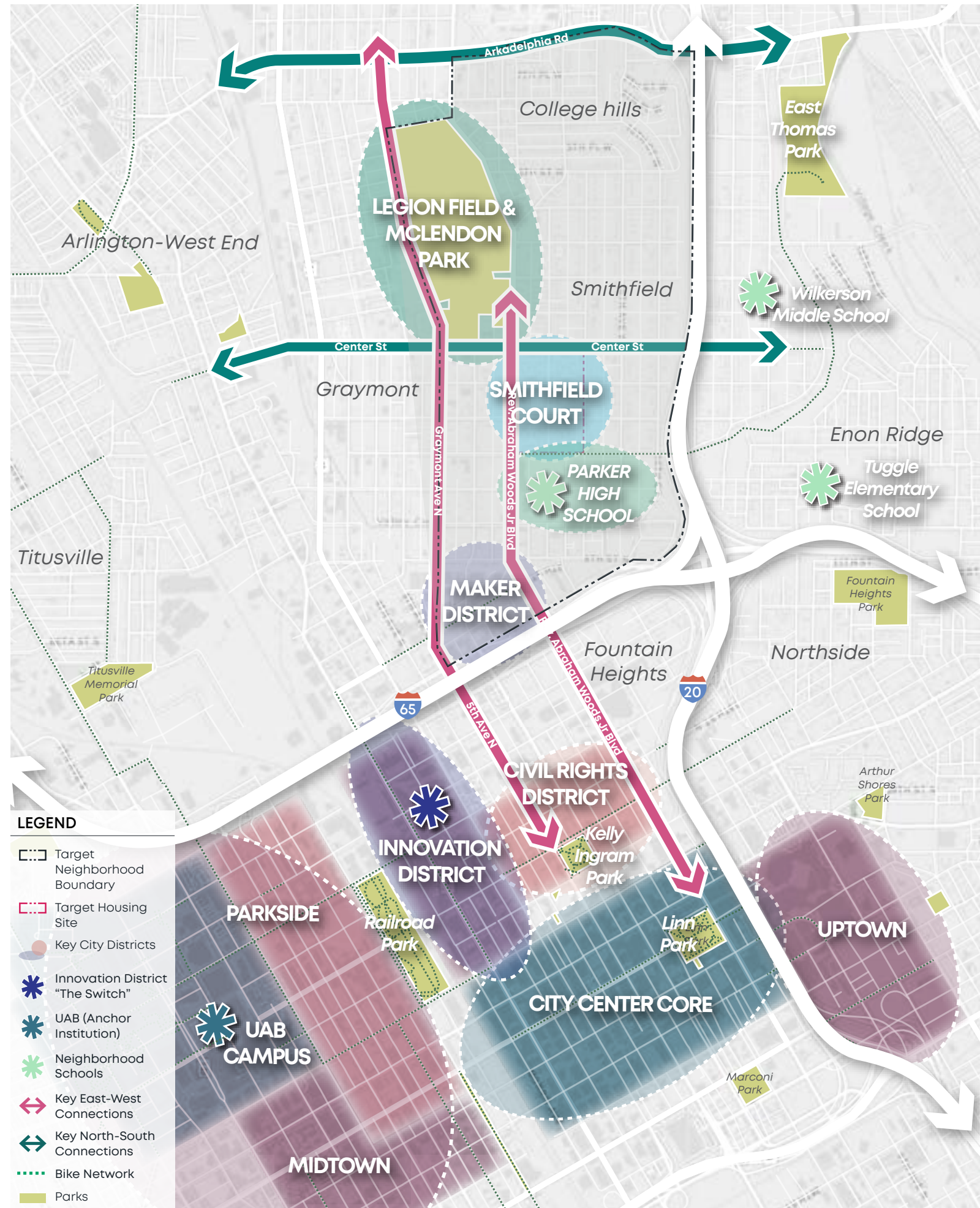


NEIGHBORHOOD INVESTMENTS

PLACEMAKING INNOVATION CONNECTED COMMUNITY

- + NEIGHBORHOOD CONTEXT AND CHALLENGES
- + BUILDING AND IMPROVING ON NEIGHBORHOOD ASSETS
- + CRITICAL COMMUNITY IMPROVEMENTS PLAN
- + COMMUNITY SAFETY

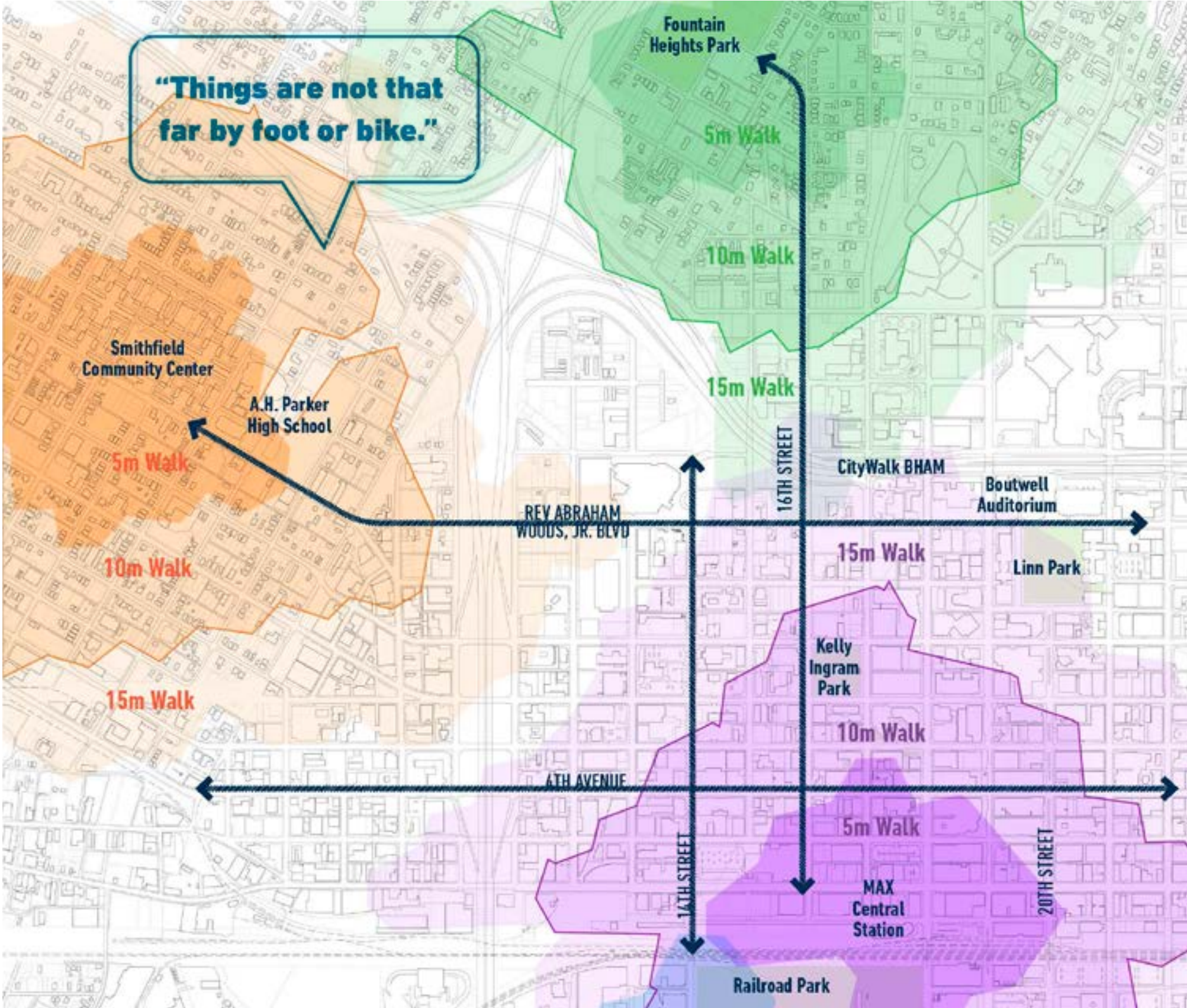
KEY DISTRICTS & CONNECTIONS



PUBLIC REALM CORRIDORS

COMMUNITY CONNECTIONS

- + The City of Birmingham is working with the Choice Team to connect the City Center to the Smithfield-College Hills-Graymont community
- + Mitigating the physical and mental barriers of I-65 include decorative street pavers and crosswalk painting, placemaking banners, bike lanes on 5th and 6th Avenues.



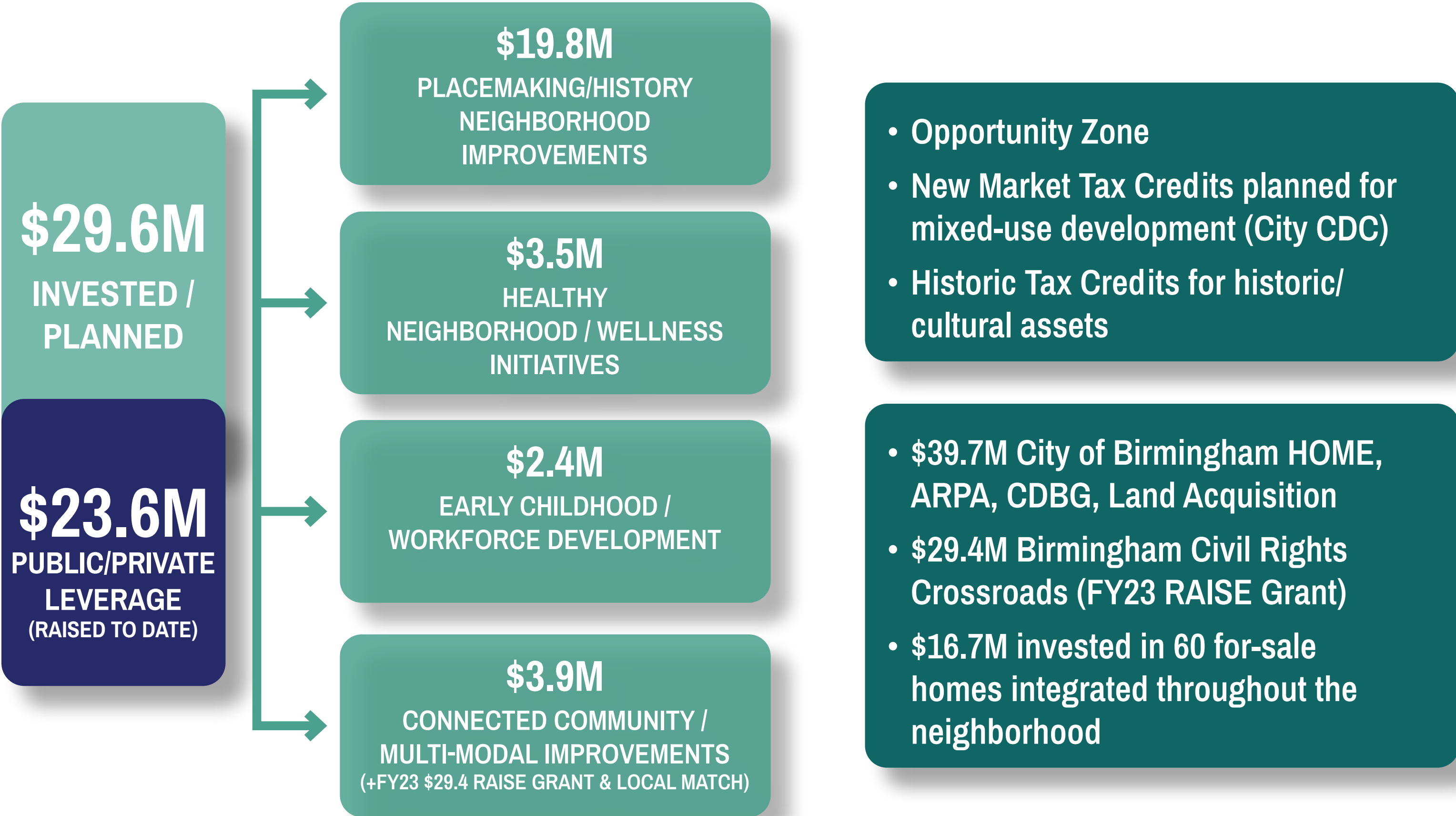
NEIGHBORHOOD INVESTMENTS

SMITHFIELD COLLEGE HILLS GRAYMONT HOUSING		253.3M
Integral, Rule, City HABD, AHFA, Private Investors	A CNI Development	242.3M
	Phase 1: Senior Living/Early Learning (Adaptive Reuse)	
	Phase 2: Intergenerational - Family/Senior Community	
	Phase 3 + 4 + 6: Intergenerational - Family/Senior Community (Mixed Use)	
	Phase 5: Senior Living	
	Phase 7: Intergenerational - Family/Senior Community	
City	B CNI Strategic Housing Property Acquisitions	6.3M
HABD, MWBEs	C Predevelopment Site Preparation	4.8M
	Relocation and Demolition	
	D Future Mixed-Income Rental Housing (additional phases)	TBD

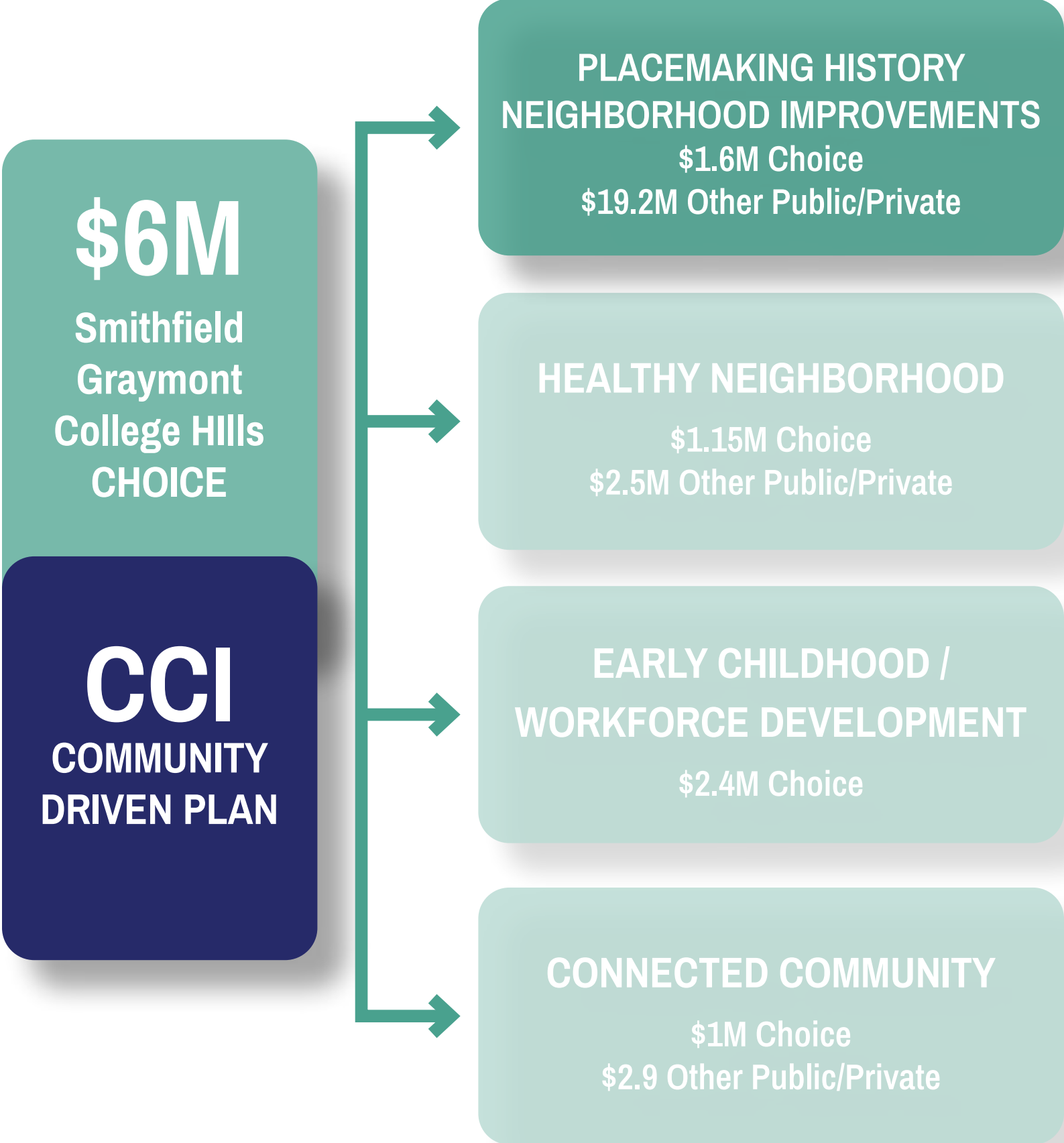
SMITHFIELD COLLEGE HILLS GRAYMONT CCI PROJECTS		29.6M
City Landbank NCRC	1 Neighborhood Improvements	19.4M
	Landbank Acquisition	500K
	Owner Occupied Rehab	950K
	Business Façade Enhancement For Sale Homes	1.2M
		16.7M
City, Create Birmingham Birmingham Civil Rights Inst	2 Placemaking	450K
	Art installation in public places	200K
	Banners and signage	50K
	Civil rights heritage trail extension	125K
	Smithfield Court resident/Smithfield-College Hills Graymont documentary film	25K
	Flower/Vegetable Gardens	50K
City DOT MHERC SSCRC LHSA	3 Healthy Neighborhood	3.5M
	Mobile Grocery Market	850K
	Mobile Wellness Van	850K
	Community Gardens	200K
	Sidewalks, crosswalks, ADA ramp improvements, lighting, street trees	1.25M
	Walking Trails	350K
City, Library Workforce Collab Youth Build	4 Social Innovation Center (mixed-use development - CNI housing phase 3)	2.4M
	New High-Tech Learning Library/History Exhibits	1M
	Social Innovation Center	800K
	Workforce Partnership Offices / Good Jobs Challenge Administration	200K
	Choice People Team TAP Offices	400K
City DOT BJCTA MHERC LHSA	5 Connected Community	3.9M
	Transit hub & Solar paneled bus shelters	750K
	Complete Streets	1.1M
	8th Ave/Blvd Complete Streets Striping	50K
	Parker HS Safe Routes to School	1M
	Micro-mobility Corrals	4K
	Broadband in Gathering Spaces	1M



NEIGHBORHOOD | INVESTMENT TOOLS | LEVERAGE



NEIGHBORHOOD | CCI PLAN | METRICS



CHALLENGES

- + High poverty rate
- + High violent crime rate
- + Vacancy rate / distressed housing

STRATEGIES

- + Acquire vacant and abandoned properties for residential and commercial development
- + Establish revolving low-interest loan fund for homeowner and business façade improvements
- + Construct 60 new for-sale homes

EXPECTED OUTCOMES / METRICS

- + Increase the number of homes sold in the neighborhood by 10 each year
- + Reduce the number of blighted sites by 25%
- + Place 10% of vacant lots into active/positive use

NEIGHBORHOOD STRATEGIES | PLACEMAKING, CULTURE, HISTORY

KEY INITIATIVES

- + Civil Rights Heritage Trail (extension) with Landmarks/Mobile App
- + Story Telling / Oral History Exhibit
- + Art Installations - Enhance Neighborhood Identity
- + Community Gateway Features

FUNDING

- + Choice Neighborhoods
- + Rebuilding American Infrastructure with Sustainability and Equity (RAISE)
- + Private Foundation Grant November 2023



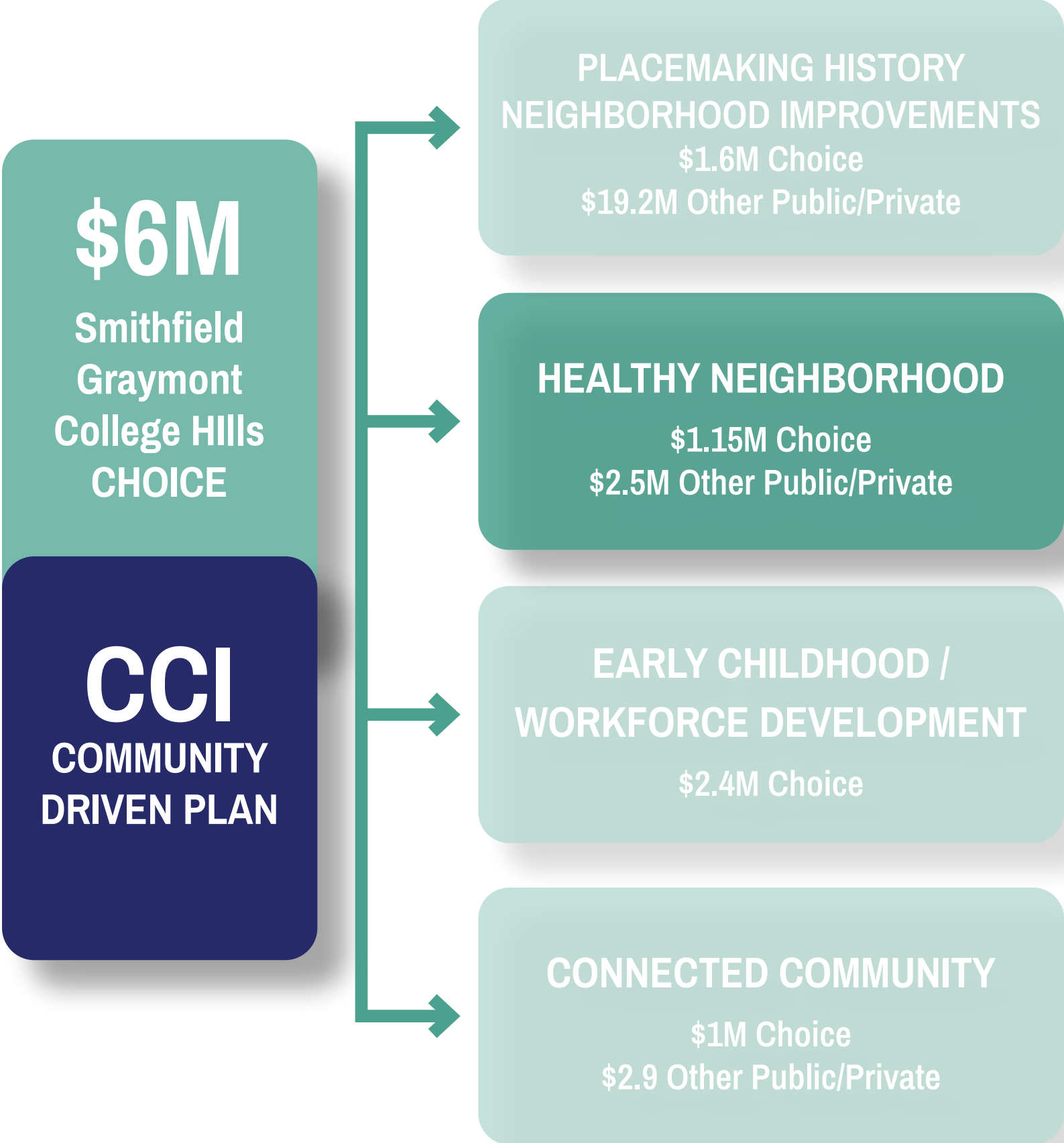
LEAD

City of Birmingham

PARTNERS

- Create Birmingham
- Birmingham Civil Rights Institute
- Smithfield Public Library
- A.H. Parker High School
- UAB - Blazer Core
- Birmingham Jefferson County Transit Authority

NEIGHBORHOOD | CCI PLAN | METRICS



CHALLENGES

- + Lack of fresh produce and food access
- + Lack of reliable access to quality healthcare
- + Increased rates of high blood pressure and diabetes among residents

STRATEGIES

- + Bring fresh food in through a mobile market and get existing stores to stock fresh produce
- + Establish community gardens
- + Install connecting walking trails throughout neighborhood

EXPECTED OUTCOMES / METRICS

- + 25% increase in pedestrian network connections
- + 100% increase in community gardens (zero existing)
- + Mobile grocery van and mobile wellness van

NEIGHBORHOOD STRATEGIES | NEIGHBORHOOD STABILIZATION

KEY INITIATIVES

- + Owner-Occupied Rehab Grant Program
- + Strategic acquisition of key site
- + Infill lot development
- + Homebuyer counseling / down payment assistance
- + Business Facade Upgrades Program



LEAD

City of Birmingham

PARTNERS

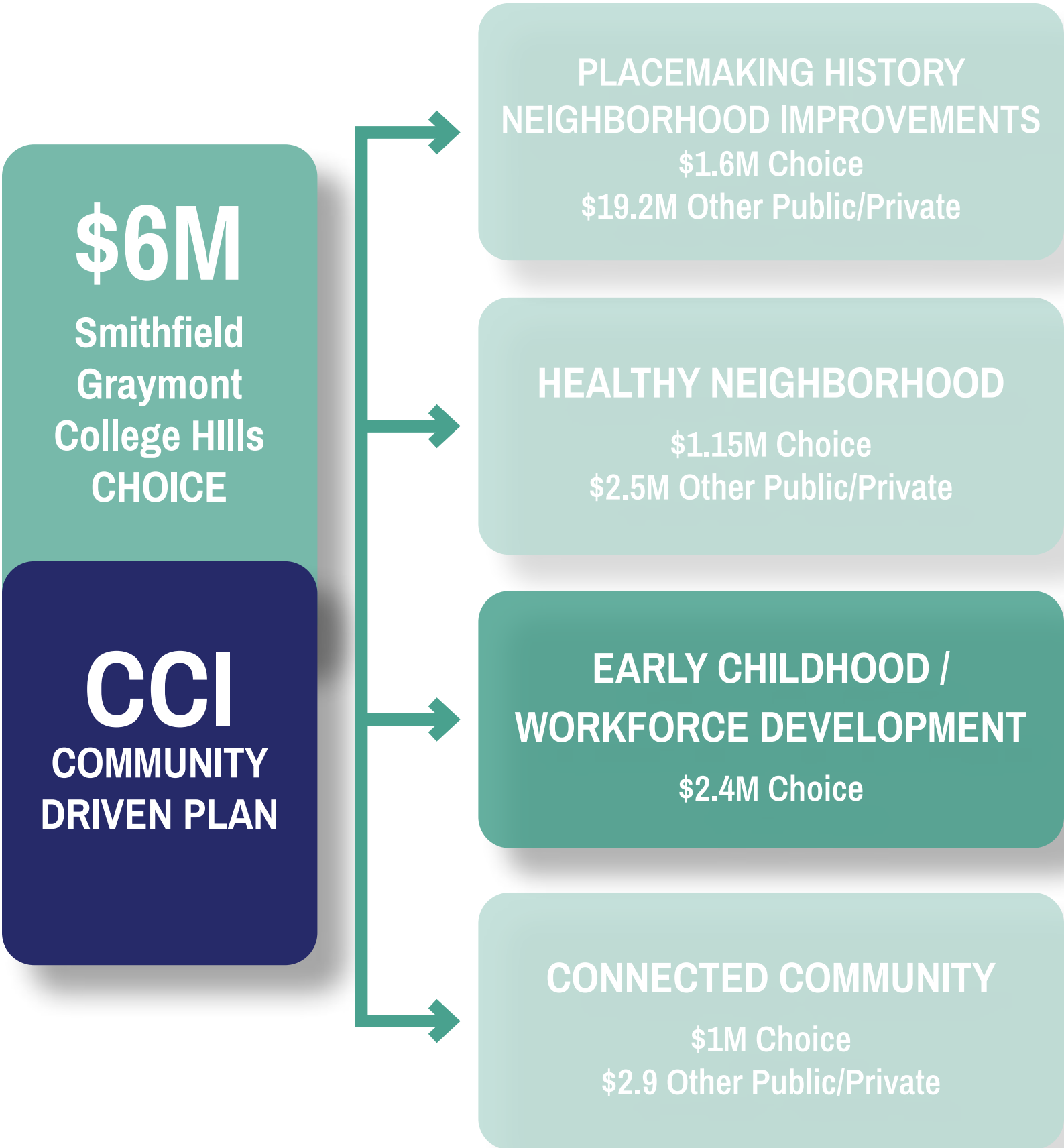
Growth by NCRC

FUNDING

- + Choice Neighborhoods
- + NCRC
- + City/Council O'Quinn Landbank Authority



NEIGHBORHOOD | CCI PLAN | METRICS



CHALLENGES

- + 484 children in Smithfield-College Hills-Graymont are 0-9 years old
- + Lack of quality affordable childcare options
- + Limited access to out-of-school programs

STRATEGIES

- + Provide Pre-K and Head Start classrooms onsite in an intergenerational environment
- + Design tools and resources to provide students with learning about earth/space, energy/light and sound, trees and plants interacting with nature, weather/climate, nutrition and fitness

EXPECTED OUTCOMES / METRICS

- + 25% of neighborhood children ages 0-9 will enroll in the onsite Pre-K and Head Start programs
- + 20% of children in kindergarten demonstrating at the beginning of the program or school year age-appropriate functioning across multiple domains of early learning
- + 20% of non-disabled working adults participate in work force development/job training programs

NEIGHBORHOOD STRATEGIES | CRADLE TO CAREER - WORKFORCE DEVELOPMENT

KEY INITIATIVES

SOCIAL INNOVATION CENTER

- + Smithfield High-tech Learning Library
- + Birmingham Civil Rights Institute
- + Workforce Development Center and Good Jobs Challenge Coalition (multipurpose space)
- + Community Development Satellite Offices
- + HABD Youthbuild

LEAD

City of Birmingham



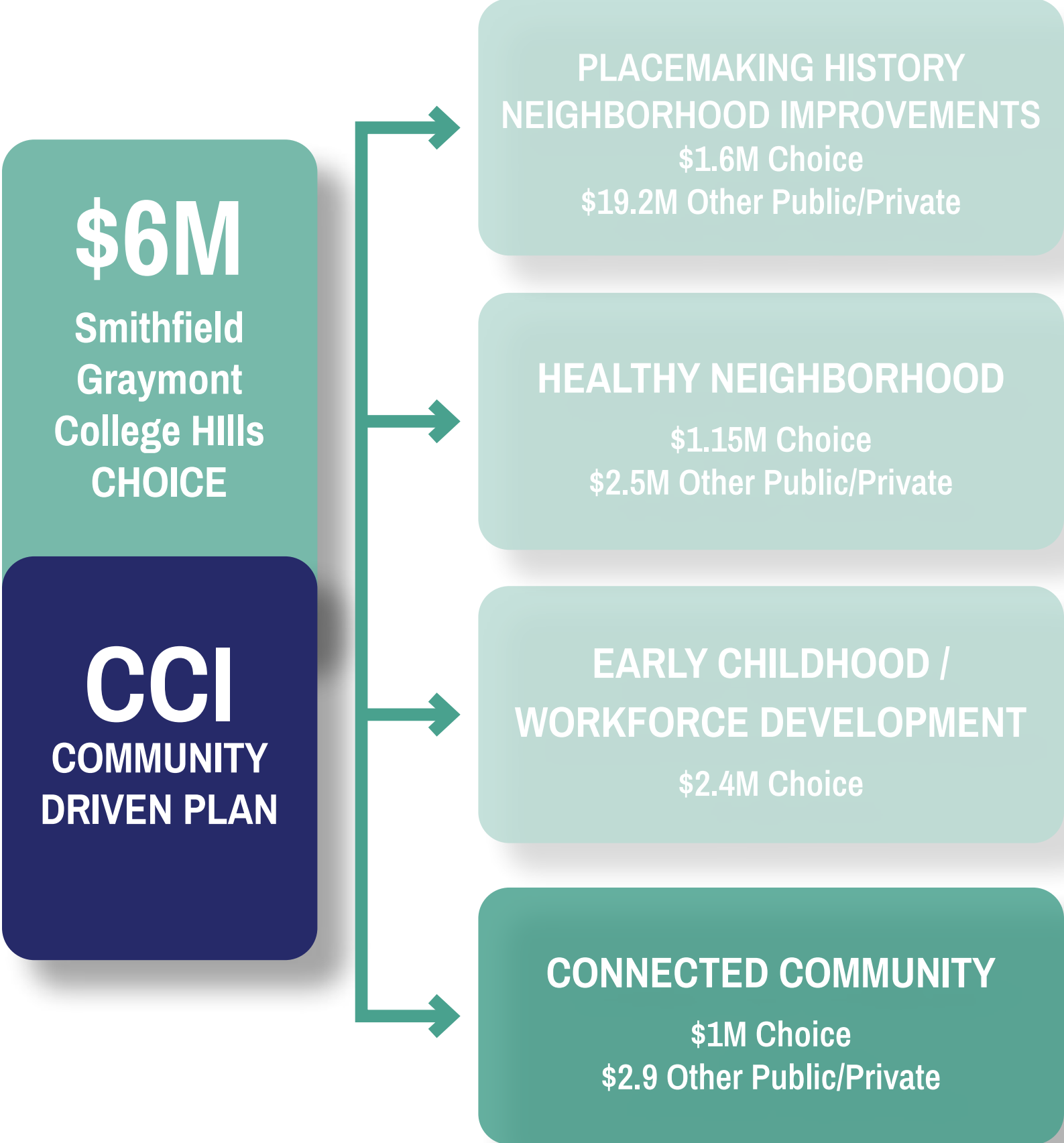
PARTNERS

- + The Birmingham Regional Health Partnership
- + Good Jobs Challenge
- + Healthcare Sector
- + Leadership Council
- + Central Six
- + Birmingham Business Alliance
- + STRIVE
- + Birmingham Promise
- + BHM Financial Freedom Project

FUNDING

- + Choice Neighborhoods
- + City ARPA

NEIGHBORHOOD | CCI PLAN | METRICS



CHALLENGES

- + Lack of internet access at home

STRATEGIES

- + Install a wireless digital neighborhood broadband network
- + Provide/set up one computer in each of public housing resident's homes
- + Have multiple wi-fi zones in public places throughout the Choice neighborhood
- + Encourage residents to participate in computer classes at the Social Innovation Center

EXPECTED OUTCOMES / METRICS

- + Provision of wi-fi zone in a public place to test the usage and value to the community
- + 100% of public housing residents will have a computer/internet access at home
- + 50% of Smithfield residents will complete computer training
- + Install a transit hub in the neighborhood and increase bus frequency and ridership by 25%

NEIGHBORHOOD STRATEGIES | CONNECTED COMMUNITY

KEY INITIATIVES

- + Live Healthsmart Expansion Area
- + Broadband Internet
- + Mobility Hub (8th Ave between 3rd & 1st Streets)
- + New solar paneled bus shelters and bus-only lanes
- + Enhanced pedestrian connections

LEAD

City of Birmingham



WHAT MAKES A GREAT PLACE?



PARTNERS

- + Affordability Connectivity Program
- + UAB - Minority Health and Health Equity Research Center
- + UAB Sustainable Smart Cities Research Center
- + ConnectHomeUSA
- + BJCTA

FUNDING

- + Choice Neighborhoods
- + Live Healthsmart Alabama
- + Connect 99
- + FY23 RAISE

COMMUNITY SAFETY | CRIME PREVENTION

Smithfield-College Hills-Graymont: Part I Violent crime rate of 39 incidents per 1,000 residents (2019-2021)

CURRENT INITIATIVES

- + Urban Alchemy
- + Aspen Institute
- + Common Ground HEAT Curriculum
- + Justice and Governance Partnership
- + RESTORE Pilot Project
- + Hospital-linked Violence Intervention Program
- + Path Forward
- + Safe Havens
- + The SURGE project
- + Strategy Enhances Broader Youth Investments
- + Mental Health Support for Birmingham City Schools Students

COMMUNITY POLICING

- + Build and enhance the capacity of the cross-sector partnership and community residents
- + More effectively target the presenting crime issues
- + Ensure long-term planning and implementation of broader neighborhood revitalization strategies
- + Create greater physical connectivity within community

COMMUNITY BASED APPROACH

- + Build and enhance capacity of Neighborhood Associations
- + Enhance Neighborhood Watch Programs
- + Increase Police Activities Leagues
- + Integrated Drug, Gang and Weapon Education